

BOTANY

Kelley Ventura



W

WINDHAM FABRICS





BOTANY *Kelly Ventura*

Kelly Ventura is back with her third fabric collection for Windham Fabrics. Botany is inspired by the beauty and wildness found in nature. Delicate petal shapes, blooming perennials, tiny seedlings and vivid colors all play a part in the garden variety of this fabric collection.

The fabric patterns and details are versatile enough to use across a range of home decor projects, women's and children's apparel and accessories. Also perfect for adding embroidered embellishments.

25 Skus printed on 100% Cotton and 3 skus on soft Cotton Lawn.

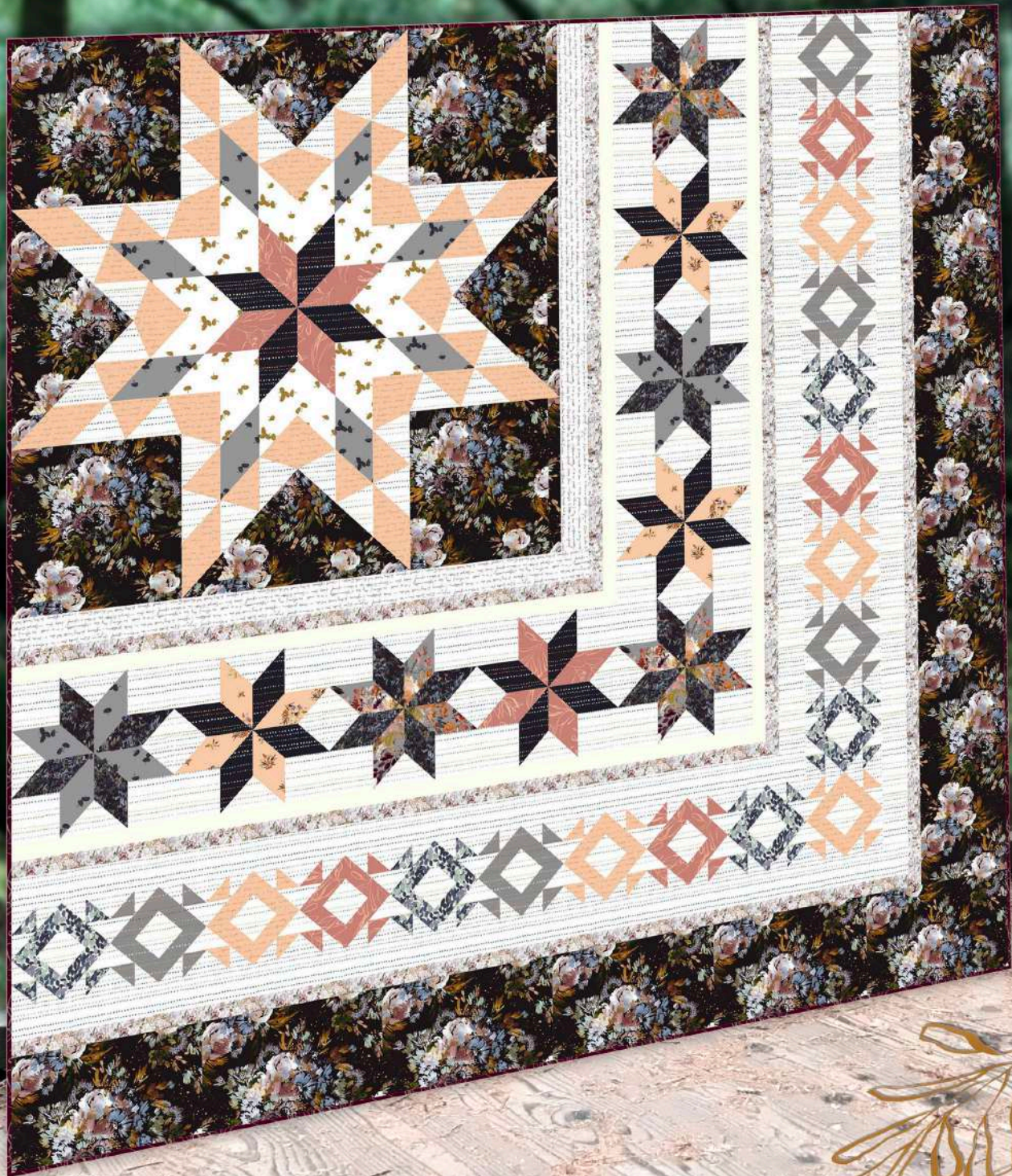
Learn more about Kelly and her work at kellyventura.com



Floral Cluster (70" x 70")

by Wendy Sheppard

free pattern: windhamfabrics.com



have flowers, always, and always — Claude Monet
the earth laughs in flowers — Ralph Waldo Emerson

sku (50342L-1 Navy) in cotton lawn



Charlie Gaftan Pattern

by Closet Case Patterns

pattern for sale: store.closetcasepatterns.com





Esme Tunic

from the book *Lotta Jansdotter
Everyday Style* by Lotta Jansdotter
book for sale: abramsbooks.com



A flower blossoms for it's own joy

Flower Box (65" x 65")

by Felice Regina

free pattern: windhamfabrics.com



KIT



Make a Wish KIT (50" x 63")

by Wendy Sheppard
kit for sale: windhamfabrics.com

KIT #: 50717QK





South for the Winter (57" x 57")

by Jessica VanDenburgh

pattern for sale: sewmanycreationsny.com





Ultimate Travel Bag
size: 18-1/2" l x 13-3/4" h x 8" d

bag patterns for sale:
byannie.com



Bowl Me Over
size: 10-1/2" h x 13" w x 5" d





The Dress Shirt

by Merchant & Mills

pattern for sale: merchantandmills.com

Quilt: Botany 101 (37-1/2" x 50")

by Heidi Pridemore

free pattern: windhamfabrics.com

Misses' Sleeveless,

V-Neck Dress (M7503)

by Nicole Miller

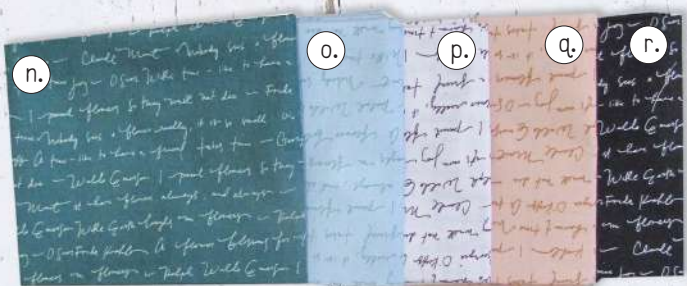
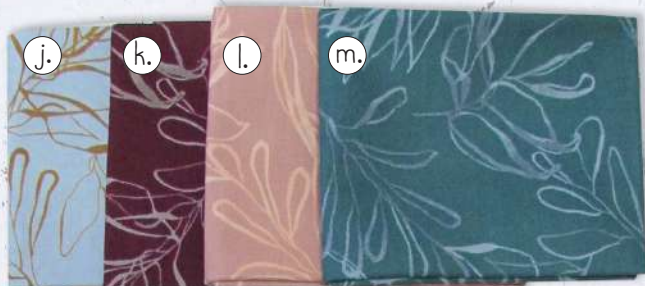
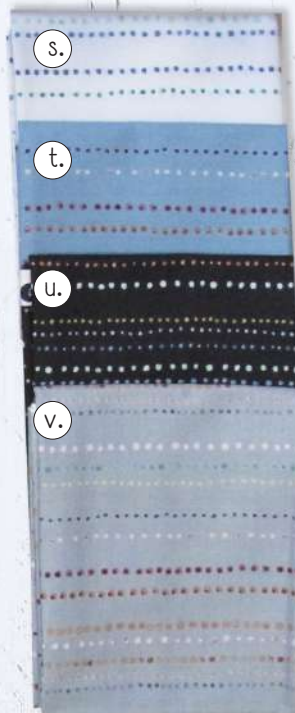
pattern for sale: mccallpattern.mccall.com




BOTANY

Kelly Ventura

25 cotton
3 cotton lawn



- a. 50342-3 White
- b. 50342-1 Navy
- c. 50342-2 Grey
- d. 50349-3 White
- e. 50349-2 Grey
- f. 50343-3 White
- g. 50343-1 Navy
- h. 50348-9 Dusty Rose
- i. 50348-1 Navy
- j. 50347-5 Light Blue
- k. 50347-8 Plum
- l. 50347-9 Dusty Rose
- m. 50347-4 Teal
- n. 50344-4 Teal
- o. 50344-5 Light Blue
- p. 50344-3 White
- q. 50344-6 Peach
- r. 50344-1 Navy
- s. 50345-3 White
- t. 50345-7 Blue
- u. 50345-1 Navy
- v. 50345-2 Grey
- w. 50346-7 Blue
- x. 50346-6 Peach
- y. 50346-2 Grey

 Prints also in Cotton Lawn

- a. 50342L-3 White
- b. 50342L-1 Navy
- c. 50342L-2 Grey