



Free Spirit 

DIGITAL COLLECTION

Into the Woods
by Katrinka

Delivering July 2021
24 SKUs



Oak Shadows PWKA002.GOLDENROD



Cosmic Clover PWKA001.MELON



Rose Petal PWKA006.PAPAYA



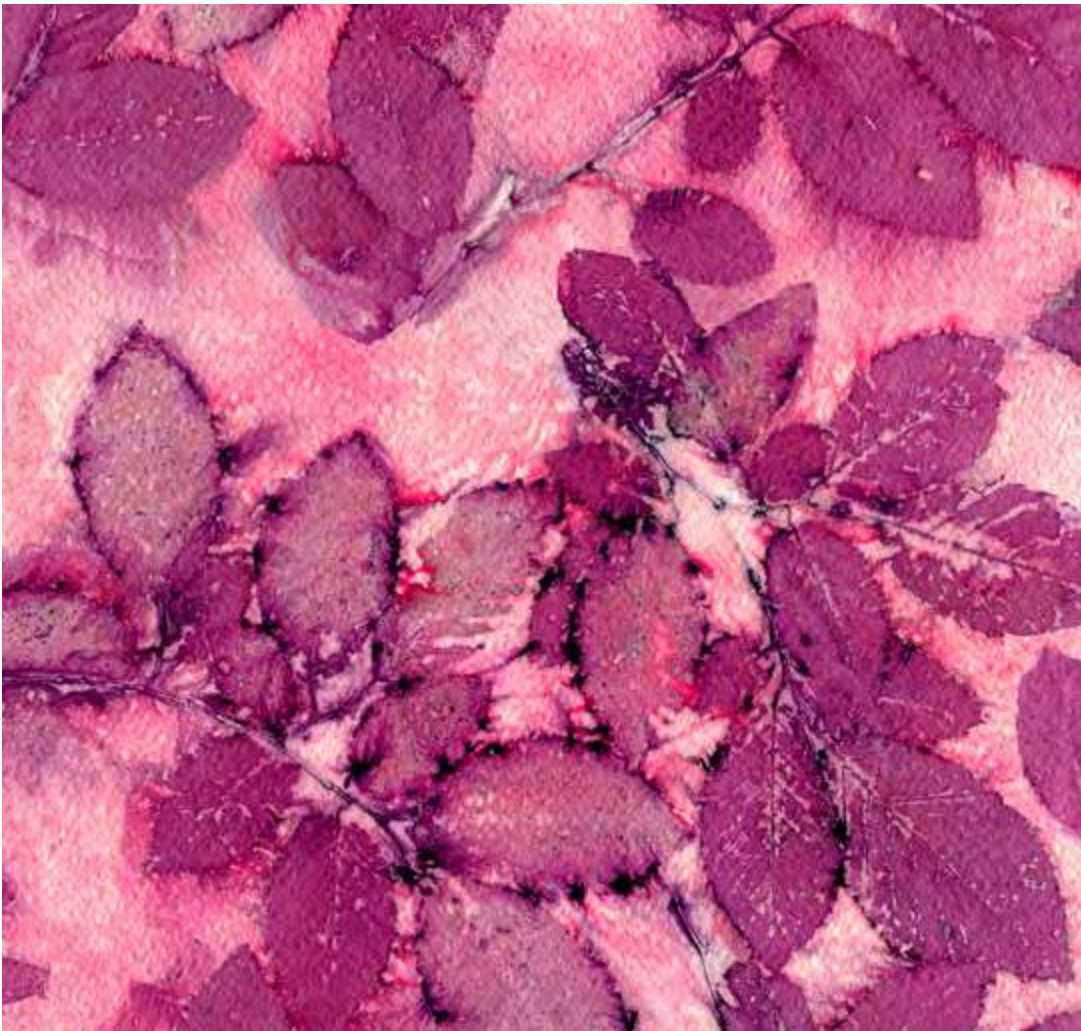
Pinoak PWKA004.SIENNA



Redtwig Dogwood PWKA005.MAHOGANY



Whispering Oak PWKA003.PEACH



Rose Leaf PWKA008.BLUSH



Oak Shadows PWKA002.SANGRIA



Cosmic Clover PWKA001.RASPBERRY



Eucalyptus PWKA009.LAVENDER



Birch Leaf PWKA007.BLACKBERRY



Rose Petal PWKA006.VIOLET



Eucalyptus PWKA009.SEAFOAM



Rose Petal PWKA006.JADE



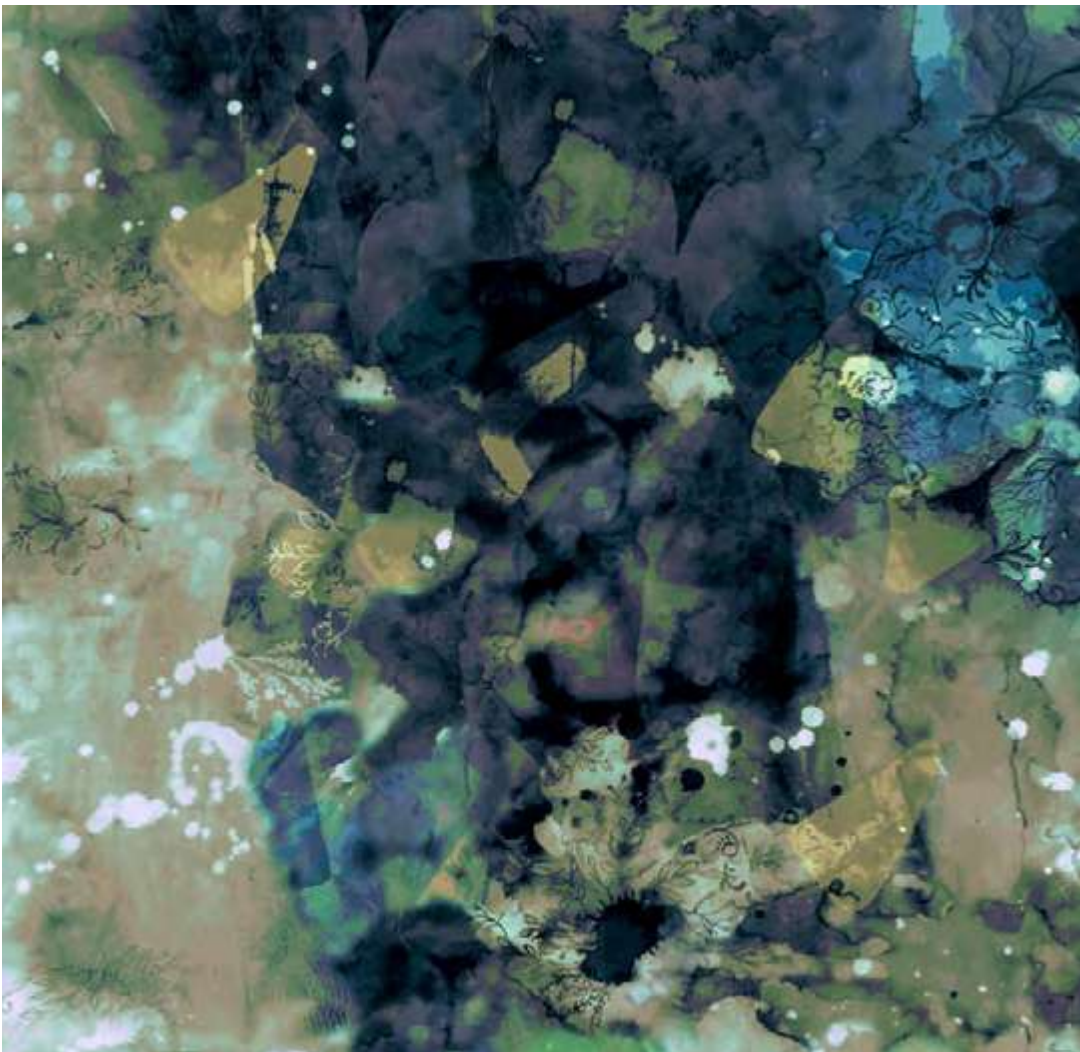
Birchwood PWKA011.OCEAN



Arctic Leaves PWKA012.SPRUCE



Dogwood PWKA010.CAROLINA



Cosmic Clover PWKA001.DREAMBLUE



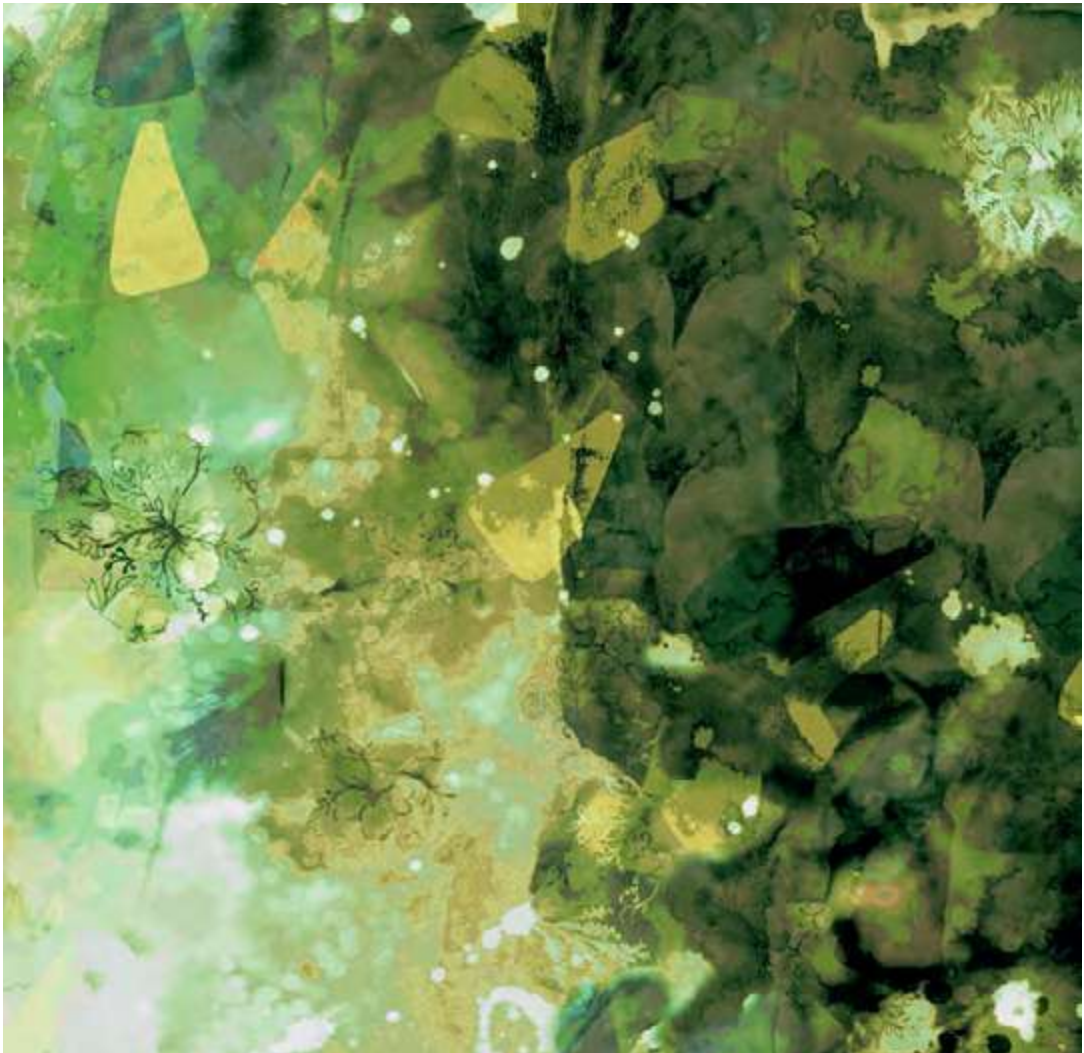
Eucalyptus PWKA009.CELADON



Dogwood Days PWKA013.GRASS



River Birch PWKA014.FOREST



Cosmic Clover PWKA001.WASABI

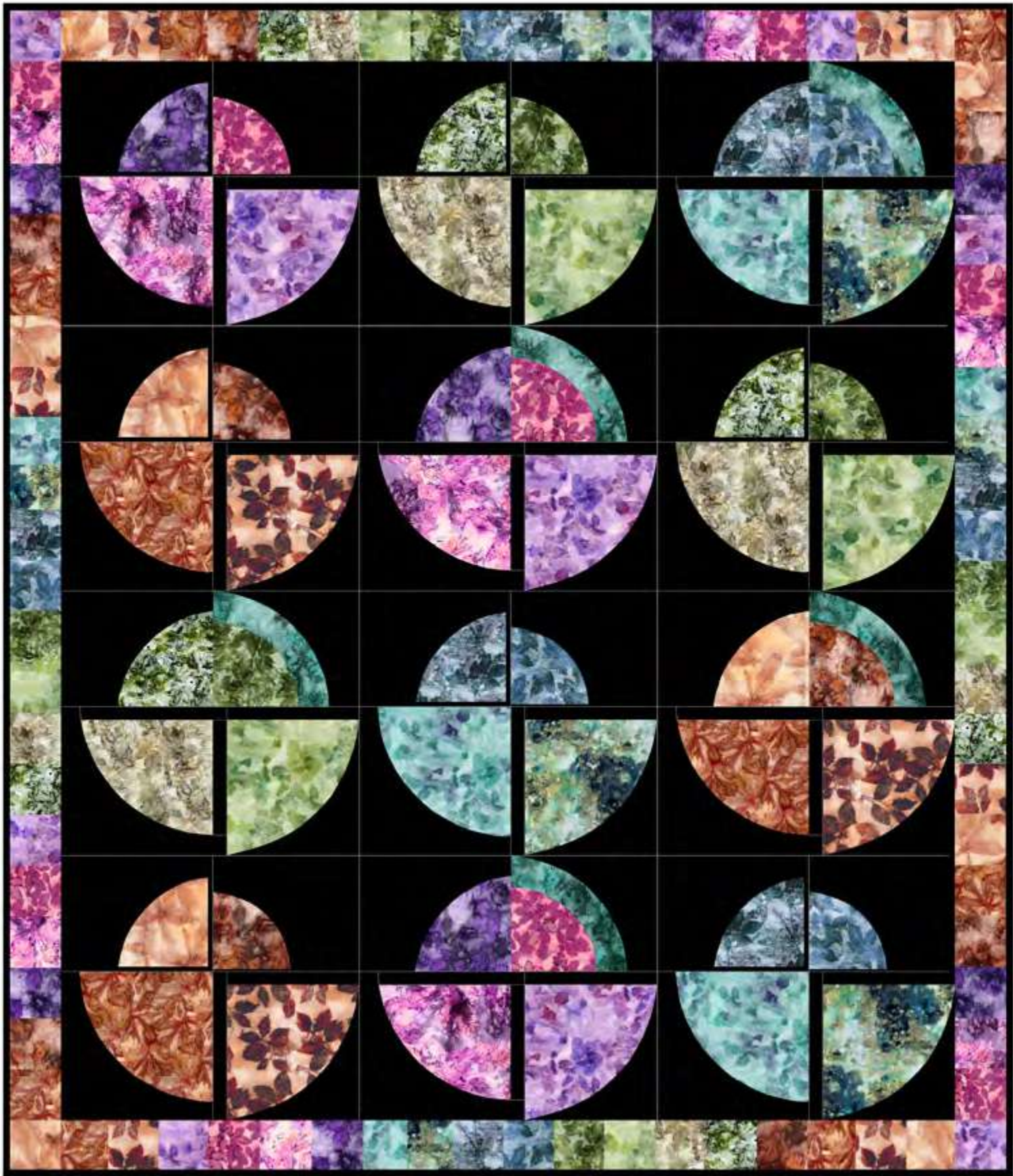


Cherry Dance PWKA015.PINE



Waterbirch PWKA016.SAGE

Windmills Quilt



Designed by Kathy Phillips
Finished Size: 58" x 68" (1.47m x 1.72m)
Techniques: Templates & Piecing
Pattern available for purchase at quiltachusetts.com

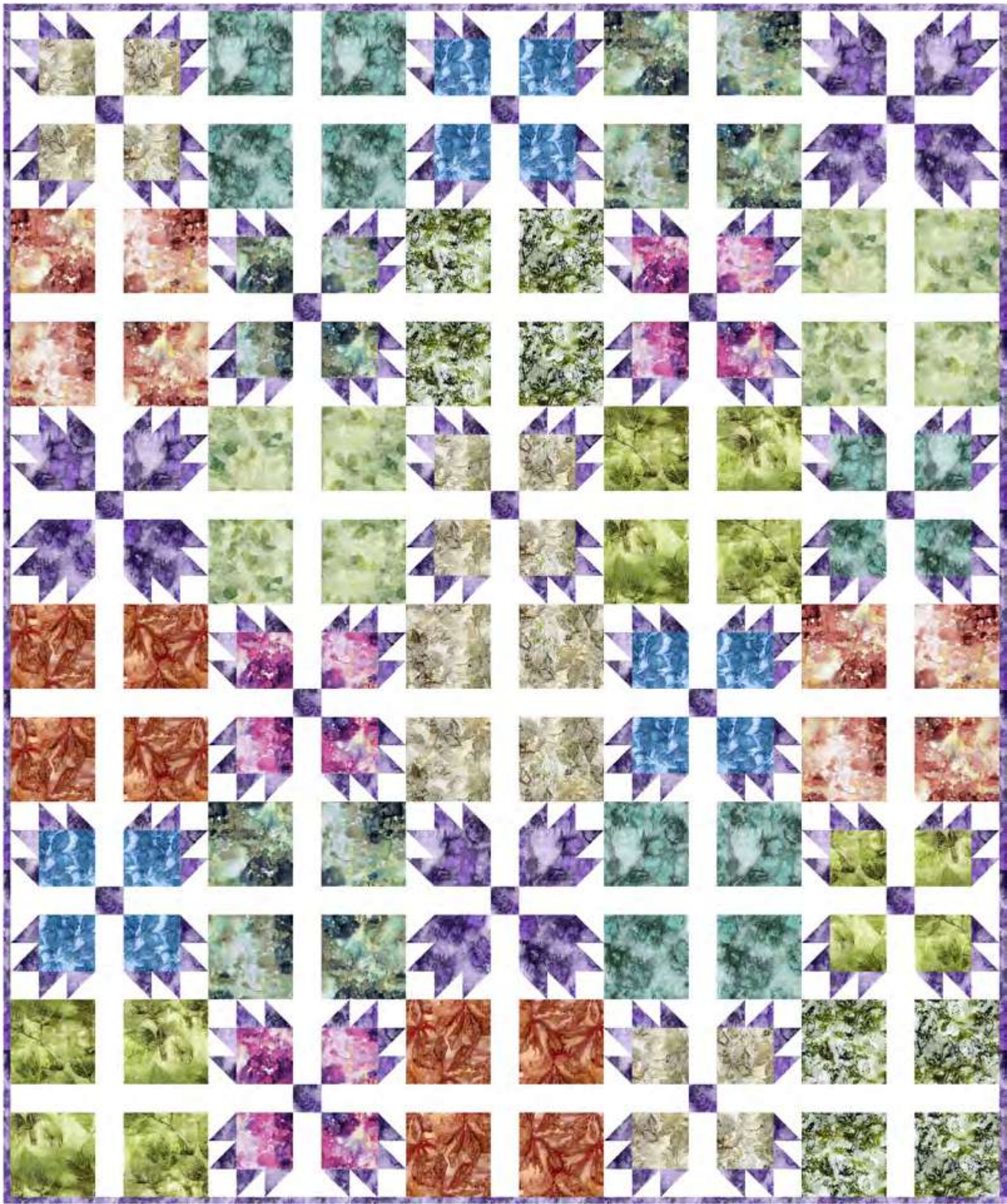


Backing Fabric Option
PWKA001.WASABI

Windmills Quilt Ordering Guide				
SKU	Yards	Meters	12 kits	24 Kits
PWKA001.DREAMBLUE	1/2 yard	0.46m	1 bolt	1 bolt
PWKA002.SANGRIA	1/2 yard	0.46m	1 bolt	1 bolt
PWKA003.PEACH	1/2 yard	0.46m	1 bolt	1 bolt
PWKA004.SIENNA	1/2 yard	0.46m	1 bolt	1 bolt
PWKA005.MAHOGANY	1/2 yard	0.46m	1 bolt	1 bolt
PWKA006.PAPAYA	1/2 yard	0.46m	1 bolt	1 bolt
PWKA006.VIOLET	1/2 yard	0.46m	1 bolt	1 bolt
PWKA006.JADE	1/2 yard	0.46m	1 bolt	1 bolt
PWKA008.BLUSH	1/2 yard	0.46m	1 bolt	1 bolt
PWKA009.LAVENDER	1/2 yard	0.46m	1 bolt	1 bolt
PWKA009.SEAFOAM	1/2 yard	0.46m	1 bolt	1 bolt
PWKA009.CELADON	1/2 yard	0.46m	1 bolt	1 bolt
PWKA011.OCEAN	1/2 yard	0.46m	1 bolt	1 bolt
PWKA012.SPRUCE	1/2 yard	0.46m	1 bolt	1 bolt
PWKA014.FOREST	1/2 yard	0.46m	1 bolt	1 bolt
PWKA015.PINE	1/2 yard	0.46m	1 bolt	1 bolt
PWKA016.SAGE	1/2 yard	0.46m	1 bolt	1 bolt
CSFSESS.BLACK*	7 1/2 yards	6.86m	6 bolts	12 bolts
Backing Fabric Option				
PWKA001.WASABI	3 3/4 yards	3.43m	3 bolts	6 bolts
* Indicates Binding Fabric				
All fabric quantities are based on 15yd Bolts unless otherwise indicated				

Yardage amounts above are estimates to buy against, not kit against.
For kitting please refer to the final pattern. It is recommended you make a quilt top prior to kitting.

Sachet Quilt



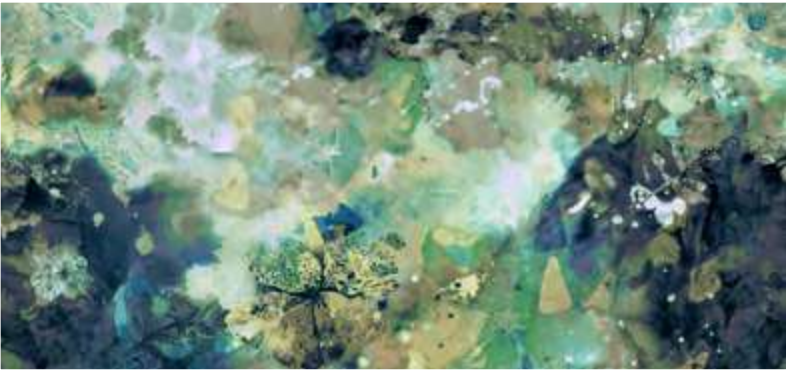
Designed by Charisma Horton
Finished Size: 70" x 84" (1.77m x 2.13m)

Technique: Pieced

Pattern available for purchase at charismacorner.com

Sachet Quilt Ordering Guide

SKU	Yards	Meters	12 kits	24 Kits
PWKA001.MELON	1/2 yard	0.46m	1 bolt	1 bolt
PWKA001.RASPBERRY	1/3 yard	0.30m	1 bolt	1 bolt
PWKA001.DREAMBLUE	1/2 yard	0.46m	1 bolt	1 bolt
PWKA004.SIENNA	1/2 yard	0.46m	1 bolt	1 bolt
PWKA006.VIOLET*	1 3/4 yards	1.60m	2 bolts	3 bolts
PWKA006.JADE	1/2 yard	0.46m	1 bolt	1 bolt
PWKA009.CELADON	1/2 yard	0.46m	1 bolt	1 bolt
PWKA010.CAROLINA	1/3 yard	0.30m	1 bolt	1 bolt
PWKA013.GRASS	1/2 yard	0.46m	1 bolt	1 bolt
PWKA015.PINE	1/2 yard	0.46m	1 bolt	1 bolt
PWKA016.SAGE	1/2 yard	0.46m	1 bolt	1 bolt
CSFSESS.ARWHT	3 yards	2.74m	3 bolts	5 bolts
Backing Fabric Options				
PWKA001.DREAMBLUE - 44"W	5 yards	4.57m	4 bolts	8 bolts
QBG006.PASTEL ⁺ - 108" W	2 1/2 yards	2.29m	3 bolts	5 bolts
* Indicates Binding Fabric				
⁺ 108" Wide Quilt Backs are on 12 yd bolts				
All fabric quantities are based on 15yd Bolts unless otherwise indicated				



44"W Backing Fabric Option
PWKA001.DREAMBLUE



108"W Backing Fabric Option
QBG006.PASTEL

Yardage amounts above are estimates to buy against, not kit against.
For kitting please refer to the final pattern. It is recommended you make a quilt top prior to kitting.

This presentation is a fair representation of design, scale and color of each fabric. The final fabrics may have very minimal changes.

Into the Woods *by Katrinka*

DIGITAL COLLECTION

Delivering July 2021

24 SKUs



The Into the Woods Collection takes inspiration from the beautiful nature surrounding my studio in South Carolina. I have developed such a fascination of nature! This collection was created by a hand printing technique called Eco printing; transferring natural pigment of leaves and flower petals onto fabric or paper. I love the “surprise and delight” that occurs when unwrapping the bounded pieces created by this process. The end result leaves a beautiful impression of nature’s beauty. I like to take my own spin on the technique by digitally manipulating each print, recoloring into an extraordinary color palette that entices you to make your own creations, whether it is a quilt, a piece of clothing, a wall hanging, or a beautiful landscape fabric art. Into the Woods celebrates the imperfection and beauty of nature that surrounds us, a constant reminder that we all are imperfect, yet beautiful in our own unique way.



FreeSpirit Fabrics
11121 Carmel Commons Blvd
Suite 280
Charlotte, NC 28226
1-866-907-3305



www.freespiritfabrics.com
[#freespiritfabrics](https://www.instagram.com/freespiritfabrics)

100% Cotton • 44/45" (114 cm) Wide
15 Yds (13.7 m) D/R • Imported Digital Print

Care Instructions

Machine wash cold, normal cycle with like colors.
Do not bleach. Tumble dry low. Warm iron.

⚠ Not suitable for children's sleepwear.



These designs are the property of FreeSpirit and are submitted to you in confidence for the sole purpose of soliciting your orders, in consideration of which you agree not to copy these designs or cause them to be copied directly or indirectly. ©2021 All Rights Reserved

Note: Digital reference and fabrics will never match exactly.